



General Characteristics FEP Series Three Phase Hazardous Location Wall Convactor

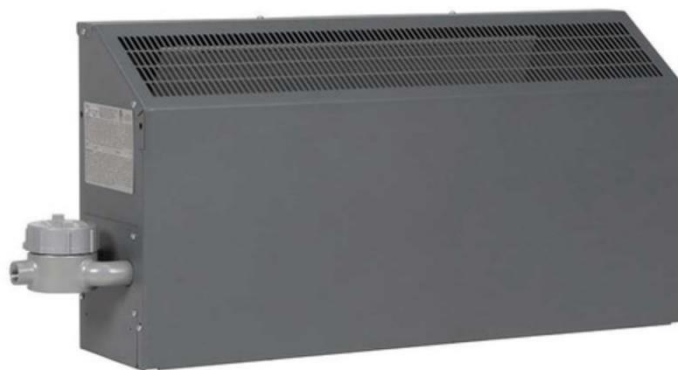
Cabinet size 18" high, 9" wide.
 Bottom In - Top Out air Flow.
 Wall mounting bracket supplied.
 Units can not be operated in room ambients exceeding 104°F (40°C). •
 Heavy duty 16 gauge steel with gray epoxy textured powder coated finish.
 9" minimum clearance from bottom of heater to floor required.
 Stainless steel cartridge element inserted into Aluminum finned Copper sheath.
 Standard unit (without EPET thermostat or control section) is NEMA 4 rated.
 Made in U.S.A.

Product Applications FEP Series Three Phase Hazardous Location Wall Convactor

These heaters are specialty items for the explosion proof environment where the air can ignite or explode and cannot be exposed to incandescent objects. Ideal for places such as warehouses, flour mill pump houses & mines etc. where the possibilities of explosions and fire exist.

Warranties FEP Series Three Phase Hazardous Location Wall Convactor

Manufacturer's Limited Warranty: 1 Year.



Specific Characteristics FEP Series Three Phase Hazardous Location Wall Convactor

Item #	Watts	BTU's	Volts	Amps	PH	Temp Rise (°F)	Cabinet length	Weight and Dimensions With Packaging (CM)	
								Lbs	W,H,D
USFTT-001	1800	6143	208	5	3	536°F	34"	50	11,20,7
USFTT-002	1800	6143	240	4.3	3	536°F	34"	50	11,20,7
USFTT-003	1800	6143	480	2.2	3	536°F	34"	50	11,20,7
USFTT-004	3600	12286	208	10	3	536°F	34"	54	11,20,7
USFTT-005	3600	12286	240	8.7	3	536°F	34"	54	11,20,7



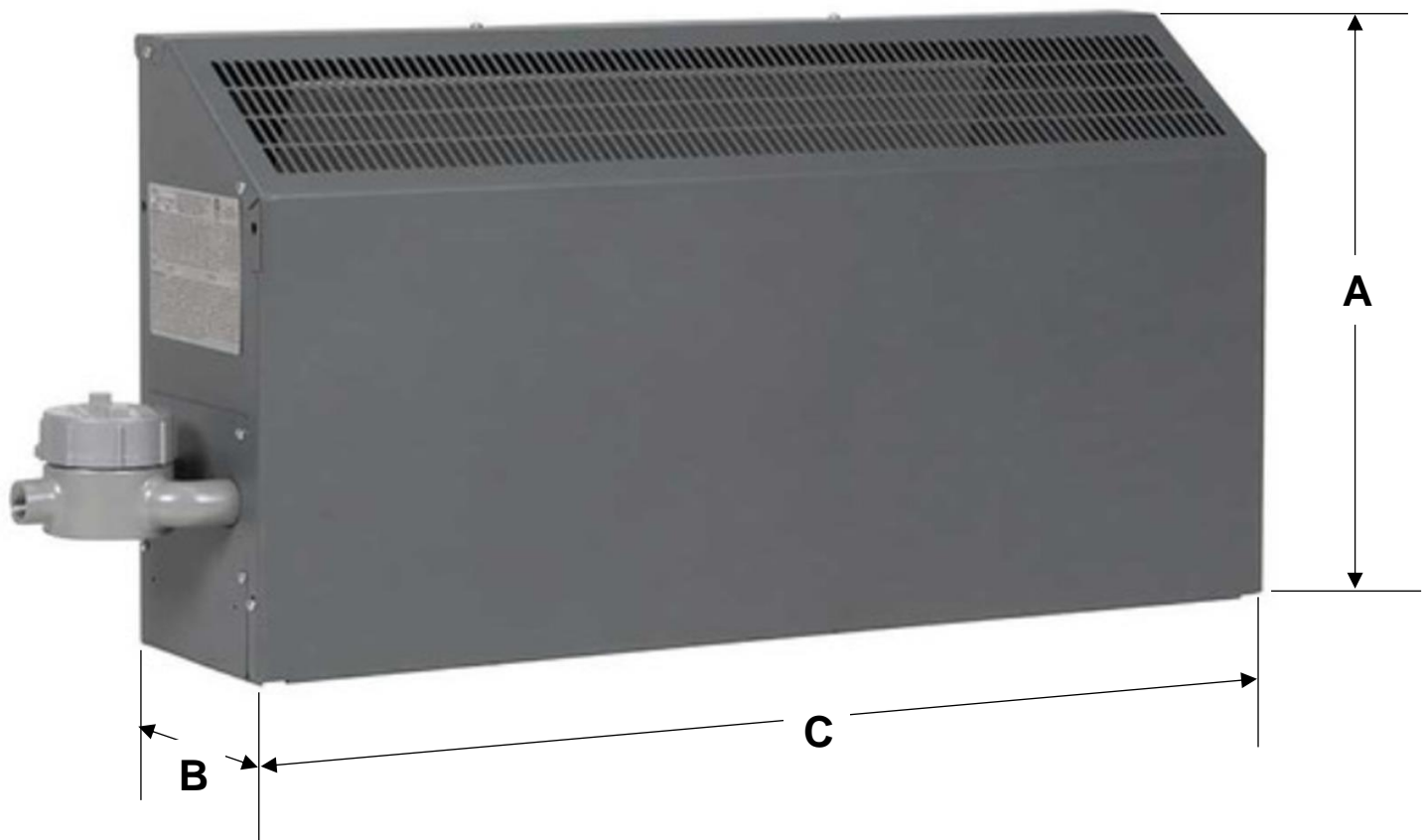
Specific Characteristics FEP Series Three Phase Hazardous Location Wall Convactor

Item #	Watts	BTU's	Volts	Amps	PH	Temp Rise (°F)	Cabinet length	Weight and Dimensions With Packaging (In)	
								Lbs	W,H,D
USFTT-006	3600	12286	480	4.3	3	536°F	34"	54	11,20,7
USFTT-007	3800	12969	208	10.5	3	536°F	58"	80	11,20,7
USFTT-008	3800	12969	240	9.1	3	536°F	58"	80	11,20,7
USFTT-009	3800	12969	480	4.6	3	536°F	58"	80	11,20,7
USFTT-010	7600	25938	208	21.1	3	536°F	58"	85	11,20,7
USFTT-011	7600	25938	240	18.3	3	536°F	58"	85	11,20,7
USFTT-012	7600	25938	480	9.2	3	536°F	58"	85	11,20,7
USFTT-013	800	2730	208	2.2	3	536°F	34"	50	11,20,7
USFTT-014	800	2730	240	1.9	3	536°F	34"	50	11,20,7
USFTT-015	800	2730	480	0.9	3	536°F	34"	50	11,20,7
USFTT-016	1600	5460	208	4.4	3	536°F	34"	54	11,20,7
USFTT-017	1600	5460	240	3.8	3	536°F	34"	54	11,20,7
USFTT-018	1600	5460	480	1.9	3	536°F	34"	54	11,20,7
USFTT-019	1700	5802	208	4.7	3	536°F	58"	80	11,20,7
USFTT-020	1700	5802	240	4.1	3	536°F	58"	80	11,20,7
USFTT-021	1700	5802	480	2	3	536°F	58"	80	11,20,7
USFTT-022	3400	11604	208	9.4	3	536°F	58"	85	11,20,7
USFTT-023	3400	11604	240	8.2	3	536°F	58"	85	11,20,7
USFTT-024	3400	11604	480	4.1	3	536°F	58"	85	11,20,7



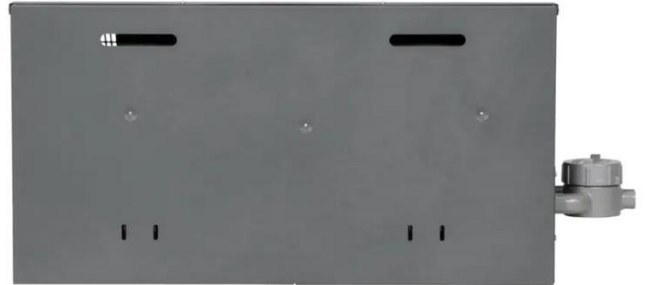
Dimensions (in) FEP Series Three Phase Hazardous Location Wall Convectors

Item #	Wide	Deep	High
	A	B	C
USFTT-001 a USFTT-024	9	5	18





Hall of FEP Series Three Phase Hazardous Location Wall Convector



ID	Author	Description Error	Description Update	Supervisor Name
V1	Angela Romero	New Data Sheet	New Data Sheet	Jessica Lorenzo